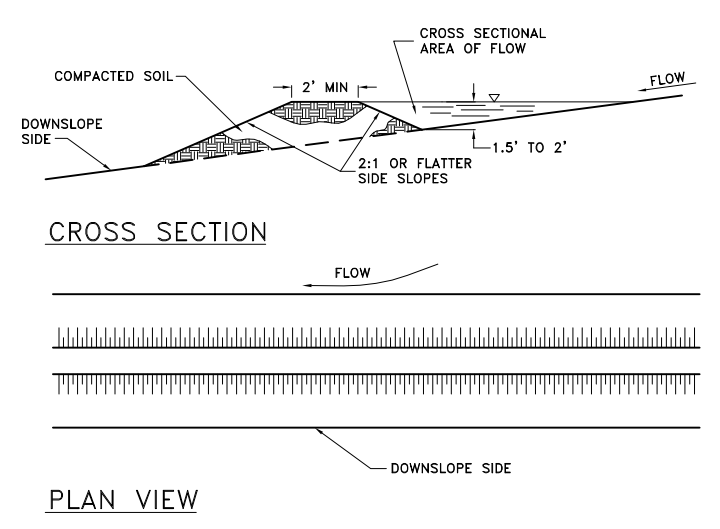
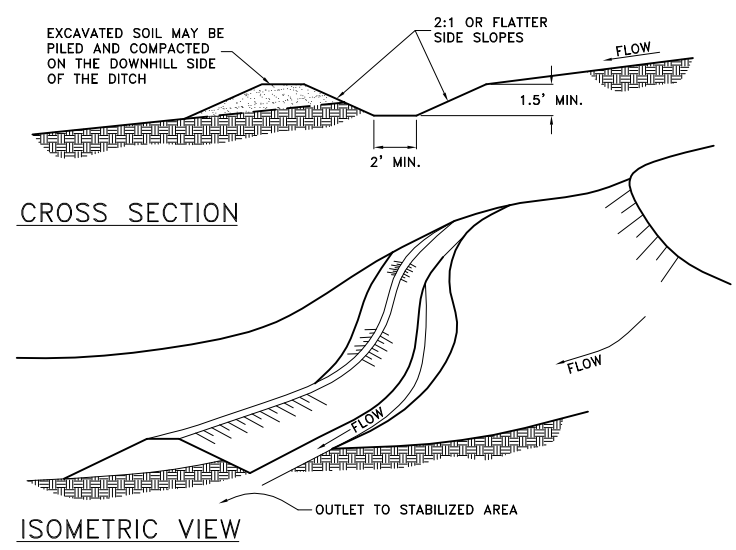


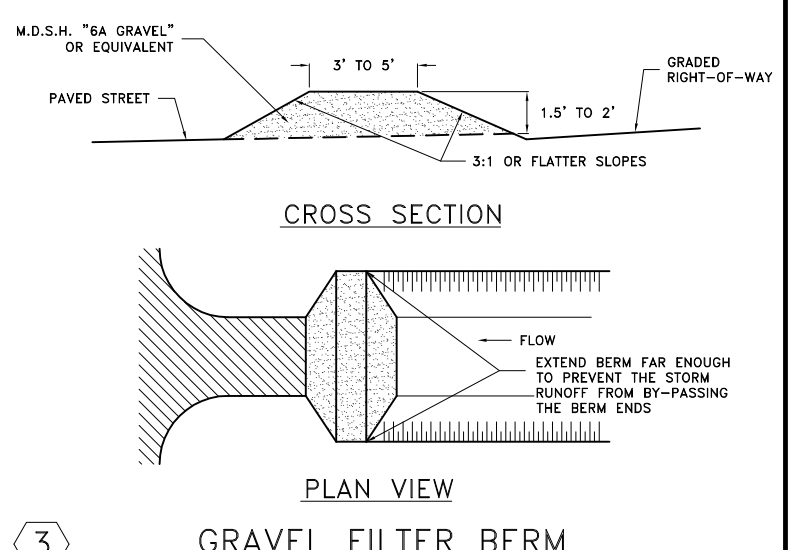
1A STRAW BALE BERM



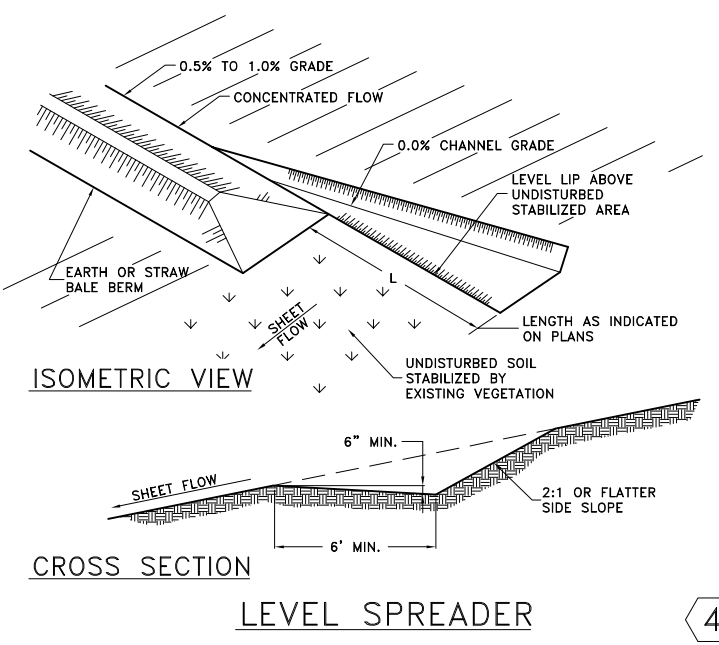
1B EARTH BERM



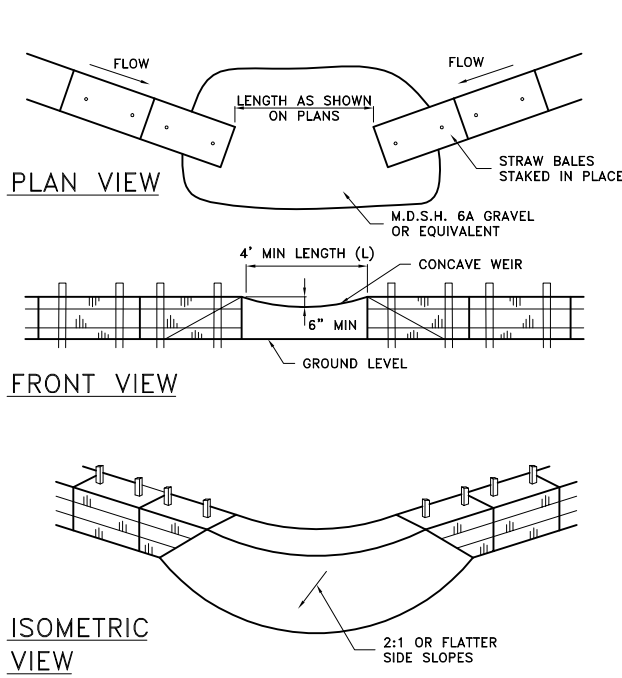
DIVERSION DITCH



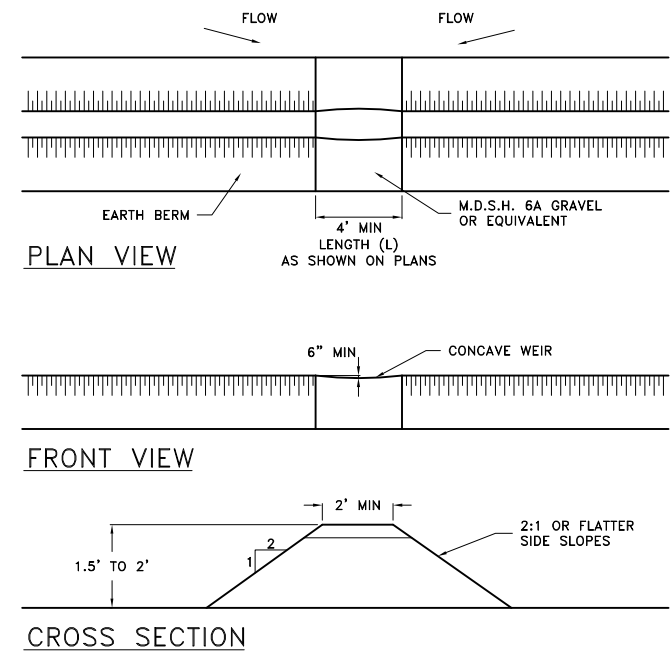
GRAVEL FILTER BERM



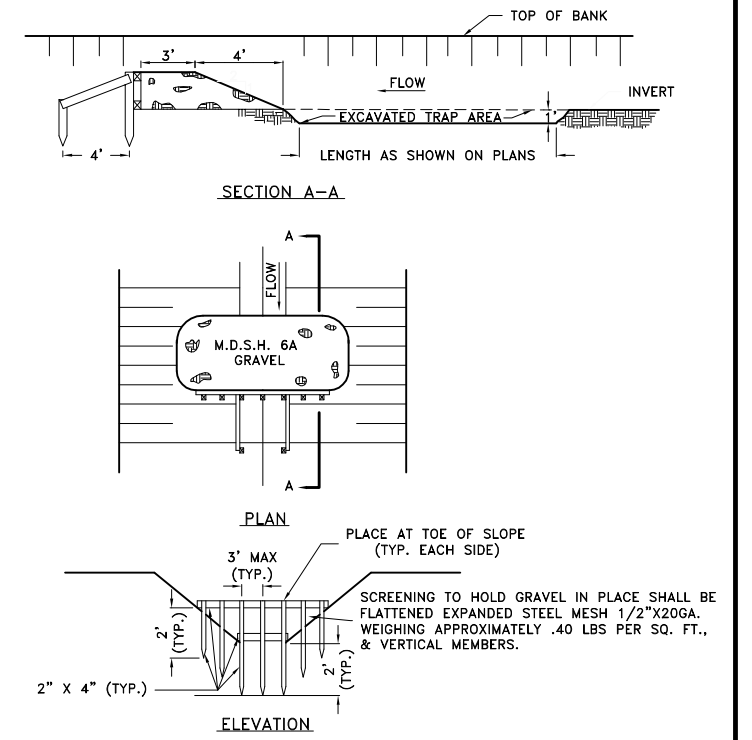
LEVEL SPREADER



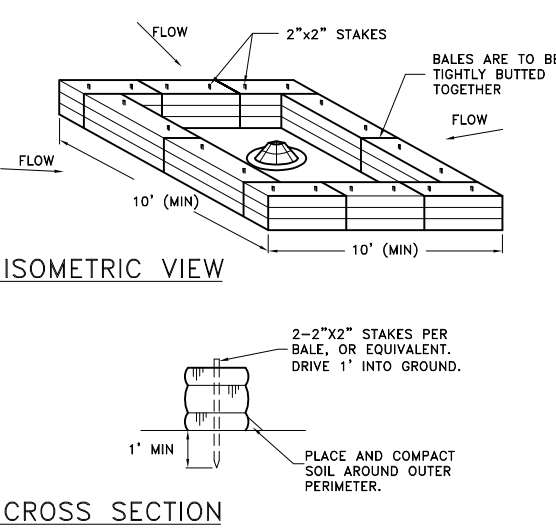
5A GRAVEL OUTLET FILTER (WITHIN A STRAW BALE BERM)



5B GRAVEL OUTLET FILTER (WITHIN AN EARTH BERM)

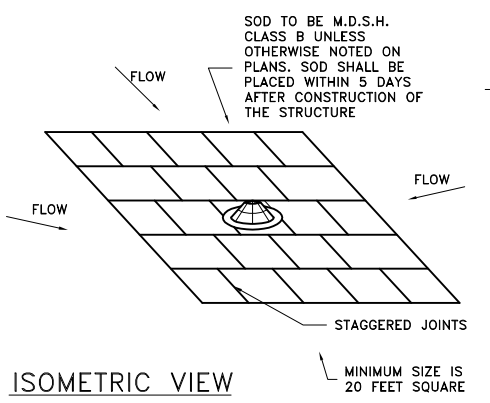


SEDIMENT TRAP

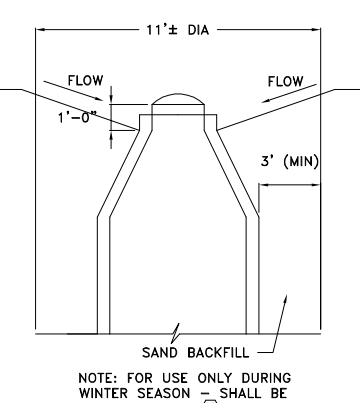


6A STRAW BALE FILTER INLET

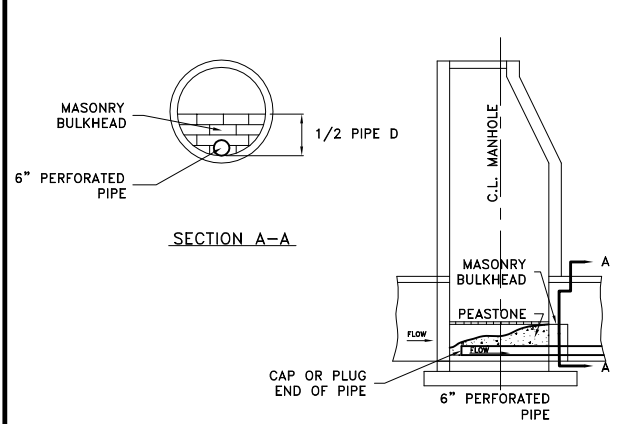
NOTES:  
INSTALL BURLAP SILT TRAPS BETWEEN ALL CATCH BASIN, & INLET, FRAMES AND COVERS. MAINTAIN BURLAP UNTIL ALL DISTURBED TRIBUTARY AREAS ARE PERMANENTLY STABILIZED WITH VEGETATION.  
ON THOSE INLETS WITH STUBS, THE STUBS SHALL ALSO BE PROTECTED WITH STRAW BALES.  
BURLAP SHALL BE CLASS 3, AASHO DESIGNATION M182-60.



6B SOD FILTER INLET



6C SEDIMENT PIT



7 OUTLET MANHOLE TRAP WITH FILTER

NOTES  
ALL SOIL EROSION AND SEDIMENTATION CONTROL (SESC) MEASURES SHALL BE INSTALLED AND MAINTAINED IN COMPLIANCE WITH PART 91, SECC, OF THE NATURAL RESOURCES AND ENVIRONMENTAL CONTROL ACT, PA 451 OF 1994, AS AMENDED.  
THE CONTRACTOR SHALL PERFORM PERIODIC MAINTENANCE OF SEDIMENTATION FILTERS AS MAY BE REQUIRED TO MAINTAIN THEIR EFFECTIVENESS.  
ALL TEMPORARY SOIL EROSION CONTROL MEASURES SHALL BE MAINTAINED UNTIL PERMANENT SOIL EROSION MEASURES ARE IMPLEMENTED.  
TEMPORARY EROSION AND SEDIMENTATION CONTROL DEVICES, PERIODIC MAINTENANCE AS REQUIRED DURING CONSTRUCTION, AND REMOVAL OF THESE DEVICES UPON COMPLETION OF CONSTRUCTION SHALL BE INCLUDED IN THE BID ITEM "TEMPORARY EROSION AND SEDIMENTATION CONTROL DEVICES."  
SURFACE DISRUPTION IN ADVANCE OF CONSTRUCTION OF WATER MAIN, SANITARY SEWER, AND STORM SEWER (CLEARING, GRADING, OR SIGNIFICANT SOD REMOVAL) SHALL BE LIMITED AS FOLLOWS, UNLESS OTHER SPECIFIC AND EROSION AND SEDIMENT CONTROL PROVISIONS ARE PROVIDED AND FUNCTIONAL.  
A. MARCH, APRIL, MAY - 5 DAYS PRIOR TO BEGINNING ANY EARTH CHANGE ACTIVITY.  
B. JUNE, JULY, AUGUST, SEPTEMBER, OCTOBER, NOVEMBER - 10 DAYS PRIOR TO BEGINNING ANY EARTH CHANGE ACTIVITY.  
C. DECEMBER, JANUARY, FEBRUARY - 15 DAYS PRIOR TO BEGINNING ANY EARTH CHANGE ACTIVITY.  
COMPLETION OF BACKFILL AND REMOVAL OF EXCESS MATERIAL SHALL FOLLOW PIPE LAYING BY NO MORE THAN 100 FEET.

© 2009 TRAVERSE ENGINEERING SERVICES, P.C.

DRAWN: RDS  
DESIGN: RDS

| MARK | REVISIONS | ASSEMBLY/CHANGE ORDER | DATE | MARK | ASSEMBLY/CHANGE ORDER | DATE |
|------|-----------|-----------------------|------|------|-----------------------|------|
|      |           |                       |      |      |                       |      |

EAGLE HARBOR TOWNSHIP  
KEWEENAW COUNTY, MI

TRAVERSE ENGINEERING SERVICES, P.C.  
ENGINEERS - SURVEYORS - GEOLOGISTS  
HANCOCK, MICHIGAN

EAGLE HARBOR  
WATER SYSTEM IMPROVEMENTS

EROSION CONTROL DETAILS

CONTRACT #1  
SCALE: VERT. N.T.S.  
HORIZ.

JOB NO. 530-01  
10-07-09  
SHEET NO. 19 OF 19

C:\Drawings\Aead\_FishEagle\_Harbor\530\530\_01\_WATERMAIN\530\_WATERMAIN\530\_PLANS\530\_SHT19\_EROSION CONTROL\_DETAIL.dwg, 6/10/2010 3:46:17 PM