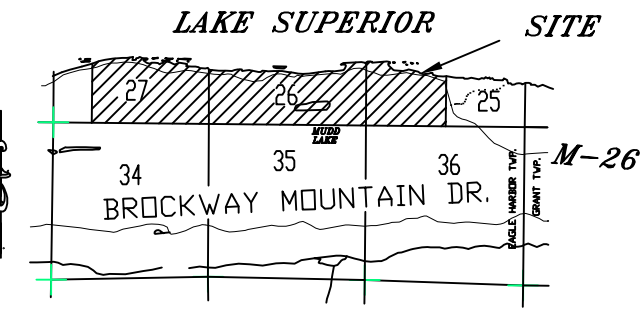


LEGEND

1. ALL DIMENSIONS ARE IN FEET.
2. ALL CURVE DIMENSIONS ARE ARC MEASUREMENTS.
3. LOT CORNERS HAVE BEEN MARKED WITH A STEEL PIPE 1/2 INCH IN DIAMETER BY 18 INCHES IN LENGTH OR 1/2" STEEL PIN.
4. MONUMENTS WITH 1/2 INCH DIAMETER STEEL ROD 36 INCHES IN LENGTH ENCASED IN CONCRETE 4 INCHES IN DIAMETER HAVE BEEN PLACED AT ALL POINTS MARKED "O" OR 1/2" STEEL PIN GROUTED IN ROCK TO A DEPTH OF 8 INCHES HAVE BEEN PLACED AT ALL POINTS MARKED "●".
5. THE BEARING OF THE CENTERLINE OF HIGHWAY M-26 AS SURVEYED BY THE MICHIGAN DEPARTMENT OF TRANSPORTATION PROJECT NO.42-15, PLAN NO. 42021 WAS USED AS THE BEARING ORIENTATION FOR THIS PLAT.
6. NR = NON RADIAL LINE.
7. R = RADIAL LINE.

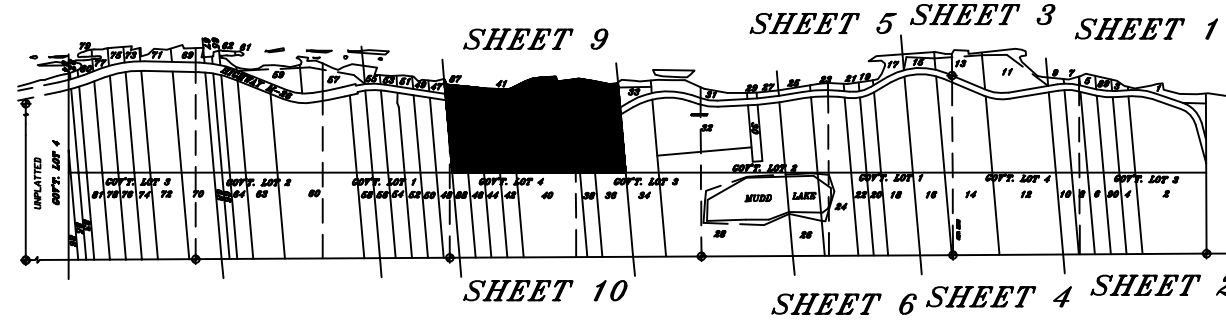
NOTE: LOTS EMBRACING THE WATER OF LAKE SUPERIOR EXTENDS TO THE WATER'S EDGE, SUBJECT TO THE PUBLIC TRUST BELOW THE ORDINARY HIGH WATER MARK.
 LOTS EMBRACING THE WATER OF MUD LAKE EXTENDS TO THE WATER'S EDGE.

MC-3 SEC'S. 26/27, T59N, R29W.
 LIBER 2, PAGE 097

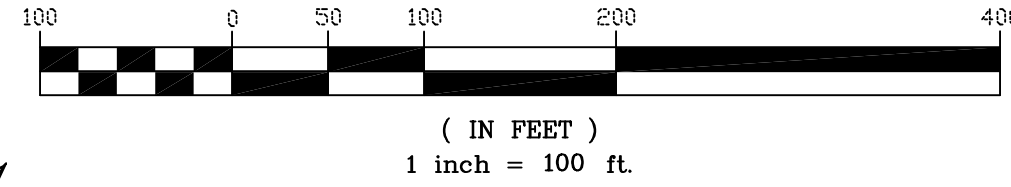


LOCATION MAP
 NO SCALE

INDEX SHEET

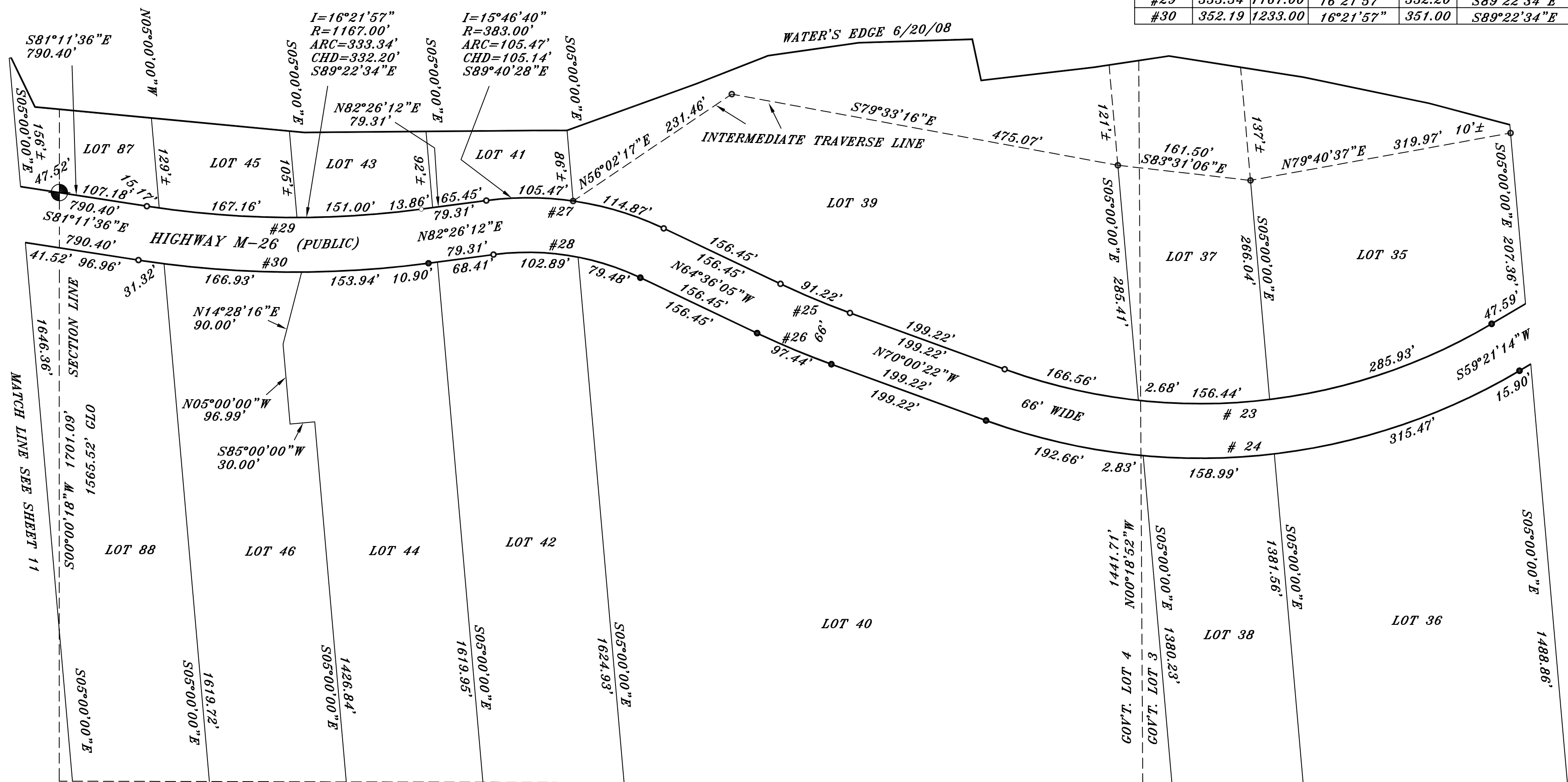


ASSESSOR'S PLAT OF HEBARD PARK
 ON GOVERNMENT LOTS 3 AND 4, SECTION 25, GOVERNMENT LOTS 1, 2, 3 AND 4, SECTION 26, AND GOVERNMENT LOTS 1, 2, AND 3, SECTION 27, T59N, R29W, EAGLE HARBOR TOWNSHIP, KEWEENAW COUNTY, MICHIGAN.



CURVE DATA

CURVE	LENGTH	RADIUS	DELTA ANGLE	CHORD	CHORD DIRECTION
#23	611.61	692.00	50°38'24"	591.90	N84°40'26"E
#24	669.95	758.00	50°38'24"	648.35	N84°40'26"E
#25	91.22	967.00	5°24'17"	91.18	S67°18'14"E
#26	97.44	1033.00	5°24'17"	97.41	S67°18'14"E
#27	220.34	383.00	32°57'43"	217.31	N81°04'57"W
#28	182.37	317.00	32°57'43"	179.86	N81°04'57"W
#29	333.34	1167.00	16°21'57"	332.20	S89°22'34"E
#30	352.19	1233.00	16°21'57"	351.00	S89°22'34"E



MATCH LINE SEE SHEET 10